

Enjoy the journey.

FC CE

BagBoy

800.955.2269 bagboy.com

A **Dynamic Brands** Company
Richmond, VA 23294 dynamicbrands.com

BagBoy
VOLT
ELECTRIC CART

USER MANUAL
Version 1.4



WELCOME

Thank you for purchasing the Volt Electric Push Cart.
Please read this manual before use.

Should you have any questions or concerns about the performance of your Volt, please contact us at:
1-800-955-2269

Warranty information is available at:
bagboy.com

QUICK TIP

After unpacking the Volt and while reading this manual, place the Volt's battery and remote on their respective chargers, and plug each charger into a power source. The battery and remote need to be fully charged before you use the cart for the first time.

CONTENTS

Registration	01	Operating	17-18
What's Included	03	Manual Mode	19
Component Identification	04	Distance Control	20
Unfolding Your Volt	05	Remote	21
Folding Your Volt	06	Remote Charging	22-23
Umbrella Holder	07	Remote LED Chart	24
Anti-Tip 4th Wheel	08	Pairing Remote	25-26
Front Wheel	09-10	TrueLine	27
Battery Charging	11	Display - System Info.	28
Battery Indicators	12	Display - Warning Info.	29-30
Battery Connection	13	Battery Care & Safety	31-32
Powering On/Off	14	FCC Compliance	33-34
Display Interface	15	FAQ	35
Display Icon Bar	16		

FIND YOUR VOLT'S SERIAL NUMBER

The serial number of your Volt is located on the bottom of the cart. This number is required when you register for the warranty online and should be kept in place.

To locate your serial number, carefully flip your Volt over.

Underneath the Release Lever, you will find a sticker with your serial number.



REGISTER YOUR WARRANTY ONLINE

Please keep the packing box in case you need to return the product for any reason. You must also keep proof of purchase in case your Volt needs to be repaired under warranty.

If the original packaging is lost when the product is returned, we can send a new box at your expense. Please note that the battery and charger do not require the original packaging, but we strongly suggest retaining the original packaging to avoid damage in transit.

Please write down the following information for future reference.

Serial Number:

Owner's Name:

Date of Possession:

Place of Purchase:

Register your warranty online at:
bagboy.com/volt-register



WHAT'S INCLUDED



Volt Cart



Volt Battery
24V Lithium Battery



Remote



Umbrella Holder



Volt Battery Charger

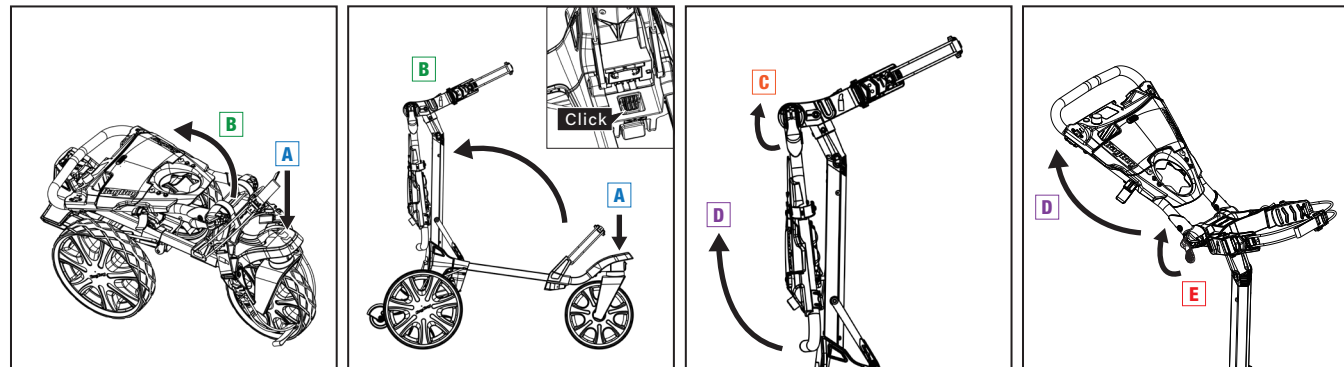


Remote Charger
USB-C Cable

COMPONENT IDENTIFICATION

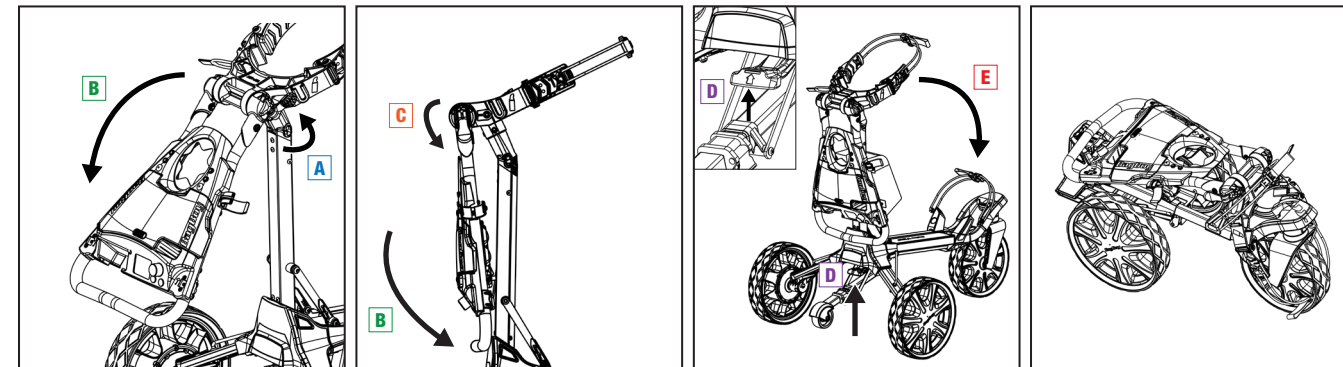


UNFOLDING YOUR VOLT



- Press down on the top of the front wheel. **A**
- Lift the upper bag bracket **B** until the cart clicks open.
- Open the handle fold lever. **C**
- Adjust the handle to a comfortable height. **D**
- Close the handle fold lever **E** to lock the handle in position.

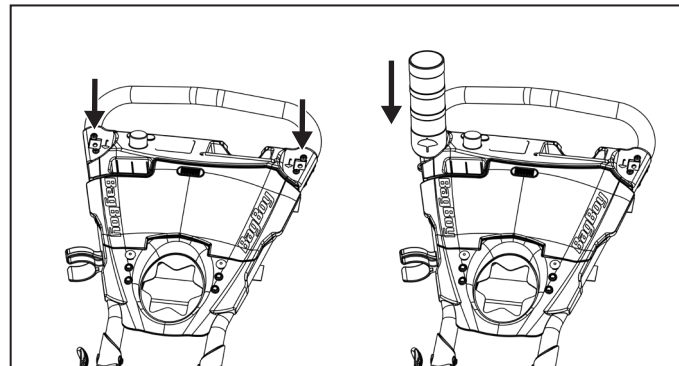
FOLDING YOUR VOLT



- Open the handle fold lever **A** to release the handle to a closed position. **B**
- Close the handle fold lever **C** to lock the handle to a closed position.
- While lifting the "release" lever **D**, push down on the upper frame at the same time. **E**
- Ready for storage.

INSTALLING THE UMBRELLA HOLDER

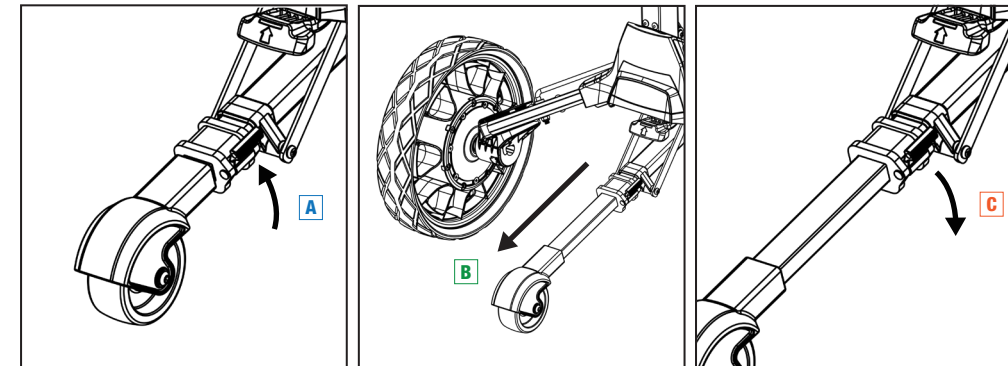
The umbrella holder can be installed on either side of the handlebar in the area marked with the umbrella symbol.



RETRACTABLE ANTI-TIP 4TH WHEEL

The 4th Wheel is designed to prevent the cart from tipping over on steep inclines.

The cart may be folded while the 4th wheel is extended or retracted.



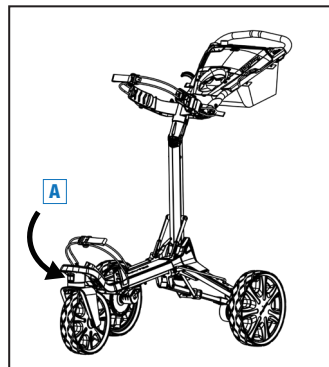
• On the right side, flip the grey quick-release buckle up. **A**

• Fully extend the tube. **B**

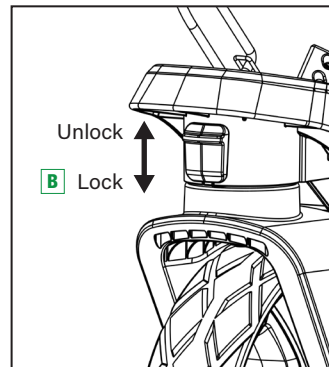
• Close the quick-release buckle. **C**

SWIVEL LOCK OUT

This feature allows you to lock the front wheel when manually pushing on a side-hill terrain to provide better control of the golf cart without the front swivel.

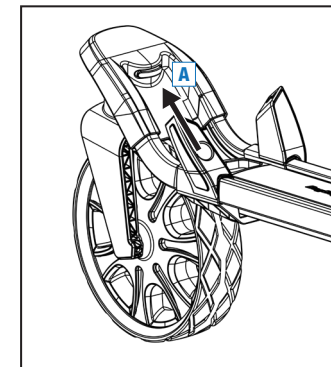


- The swivel lock is located in front of the wheel housing. **A**

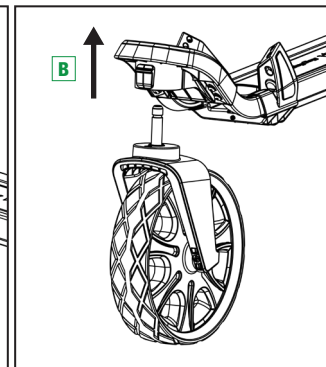


- To lock the front wheel, slide swivel lock down **B** and turn the front wheel forward until the lock clicks into place.

HOW TO REMOVE

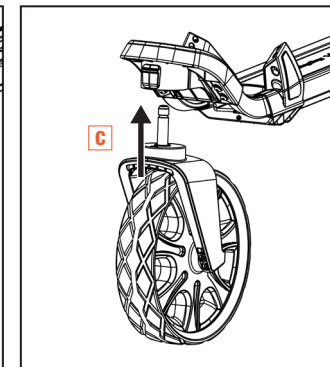


- Locate the gray release button **A** on the inside of the front-wheel housing.

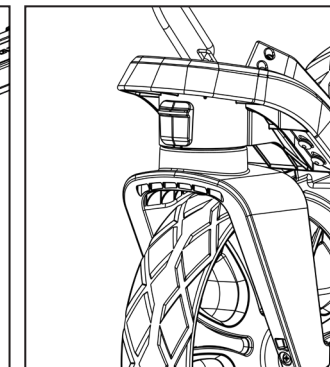


- While pressing the grey release button **A**, lift up the front wheel housing **B** to release the wheel pin.

HOW TO INSTALL



- Insert the wheel pin into the front wheel base until it clicks into place. **C**



- Ready for use.

CHARGING

We recommend fully charging your battery as soon as you open the box and after every round.

Note: A full charging process takes about 5 hours.



- Open the charging port.
- Connect the charger to the battery.
- Once fully charged, the four green LED power lights will remain solid for one second before turning off.
- The LED power lights will flash when charging is in progress.
- Replace the rubber charging port cap.



FULLY CHARGED
100% Power



CHARGING
75% - 99% Power



CHARGING
50% - 75% Power



CHARGING
25% - 50% Power



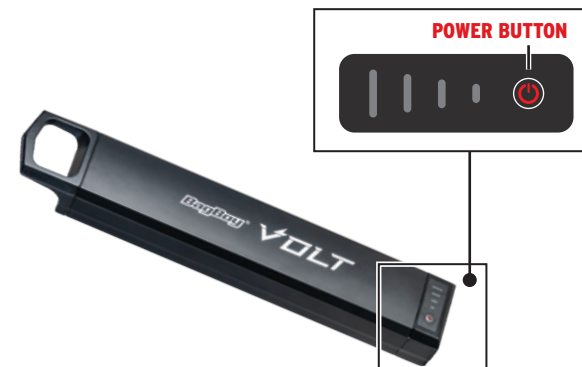
CHARGING
0% - 25% Power

INDICATOR

Press and hold the power button for **3 seconds** to turn the battery ON/OFF.

To check the power level, just tap the power button.

Note: If you keep holding the power button for over 10 seconds, the battery will turn off.



75% - 100% Power



50% - 75% Power



25% - 50% Power

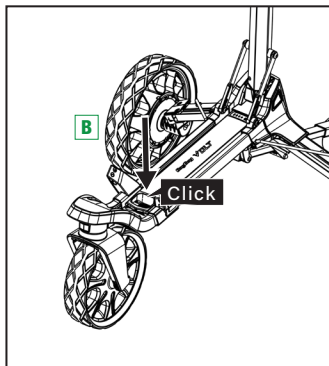
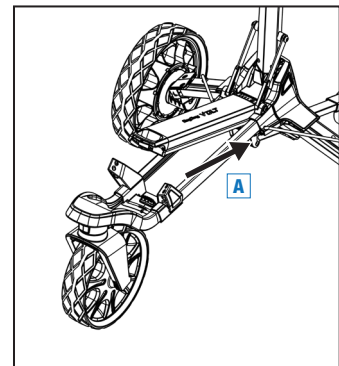


10% - 25% Power

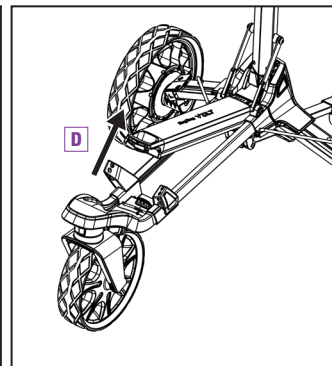
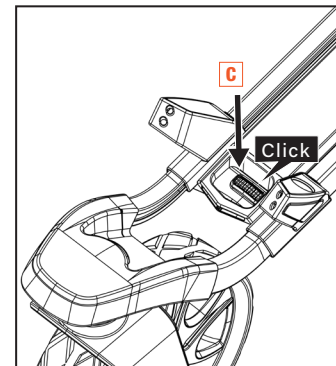


Flashing green LED
Under **10%** Power

CONNECT TO CART



REMOVE FROM CART



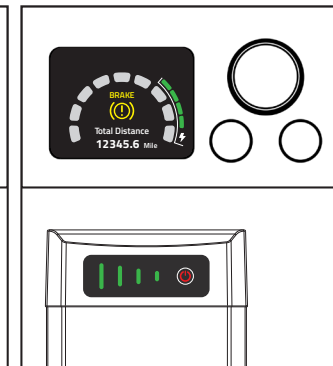
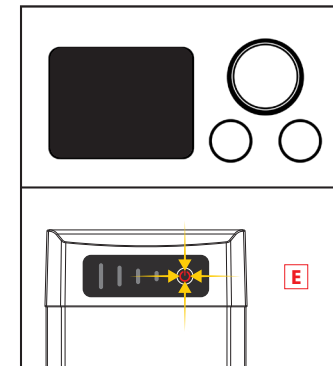
• Hold the battery handle and connect the bottom of the battery to the position on the cart. **A**

• Press down on the battery handle **B** until it clicks into place.

• Press down on the gray release button **C** near the handle of the battery on the cart until hearing a click.

• Pull out battery. **D**

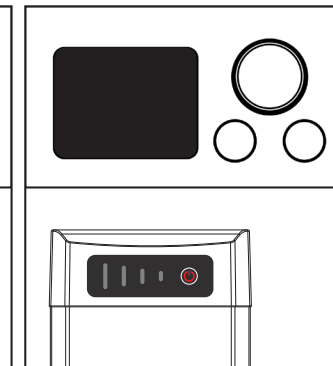
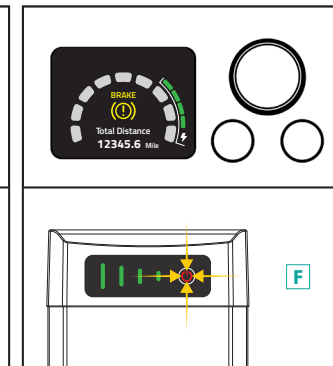
POWERING ON



• Connect the battery to the cart.
• Press and hold the power button. **E**

• Ready for use.
Note: The brakes will be activated automatically every time you turn the power on.

POWERING OFF

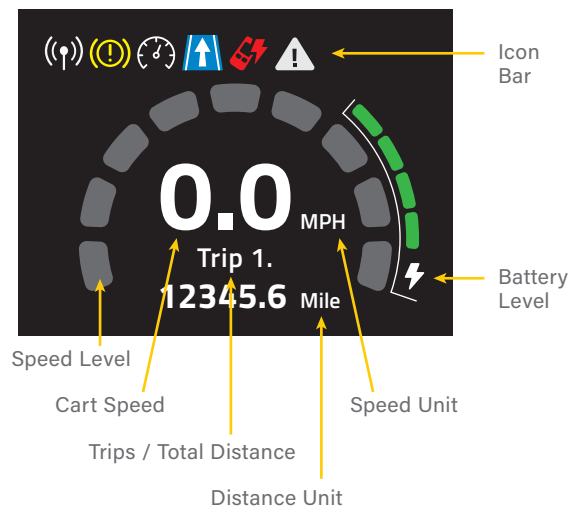


• Press and hold the power button **F** until the battery LED lights and Volt display turn off.
Note: The brakes may only be activated while the power is on.

• Ready for manual mode or folding and storage.
Note: Retract the 4th wheel for more compact storage.

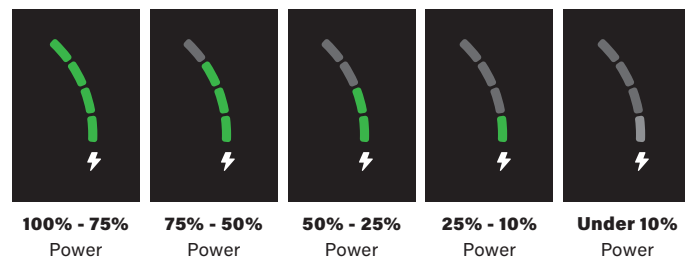
INTERFACE

Become familiar with the display before use.



BATTERY LEVEL

Always make sure the battery is fully charged before use.



ICON BAR

The icons indicating the cart's status are shown at the top of the screen. The description of each icon can be found in the table below.

ICON	NAME	MEANING
	Signal	The cart receives the signal from the remote.
	Stop	Brakes have been activated.
	Distance Control	Moving by Distance Control function.
	TrueLine Tracking	TrueLine Tracking is engaged.
	Remote Low Power	Remote needs to charge.

DISTANCE MEASURING & SETTING

Record your Total Distance and up to two trips at a time in MPH or KM.

RECORD: TOTAL DISTANCE / TRIP 1 / TRIP 2

- Press the left button to switch between these modes.

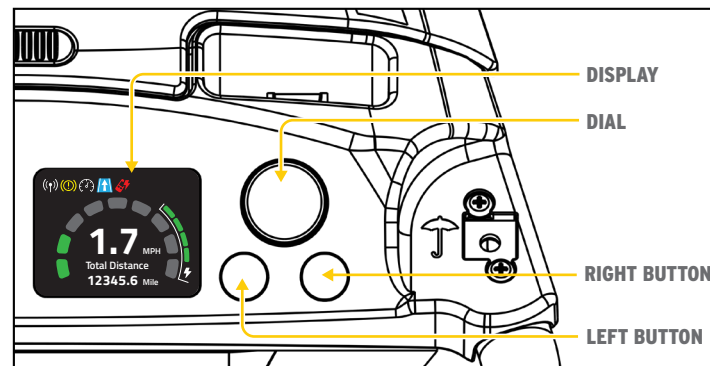
UNIT OF SPEED: MPH / KM

- Press the right button to switch between these units.

RESET: TRIP 1 / TRIP 2

- Toggle to the trip you would like to reset.
- Press and hold the right button for 3 seconds to reset the recording of the trip.

Note: Total Distance cannot be reset.



CONTROL

There are three control modes to choose from, each suited for specific situations or environments.

MANUAL MODE

This function allows you to push the cart manually without the motors activated.

- Parking lots
- Moguls
- Dead battery

DISTANCE CONTROL

This function can send the cart to the distance you desire, up to 80 yards.

- Straight and open fairways

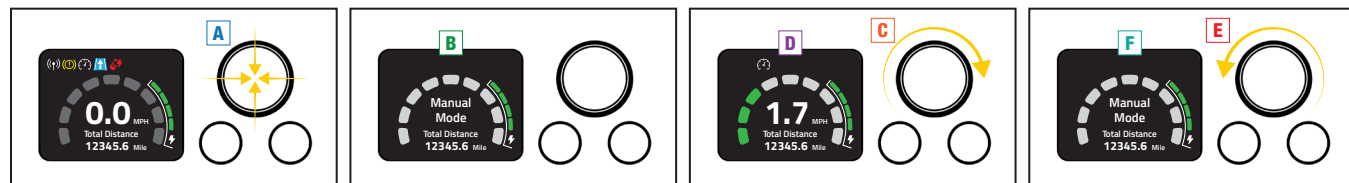
REMOTE CONTROL

Direct your cart forward, backward, left, or right.

- Cart paths
- Fairways

MANUAL MODE

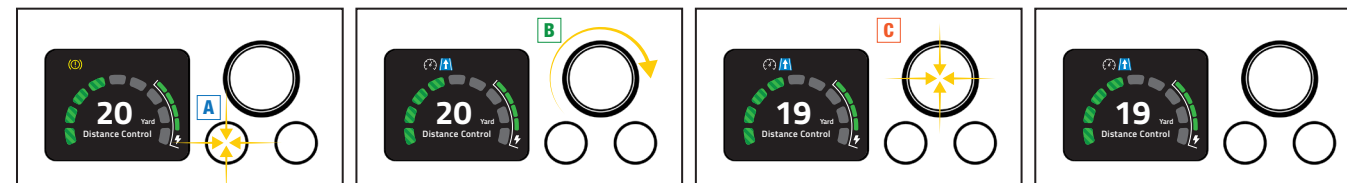
Use this mode for ultimate control, avoiding potential damage to your cart or others' personal property. This mode helps conserve battery life. Manual Mode also works while the cart is powered off.



- Turn the dial counter-clockwise until the speed level is zero.
- Press the dial to activate **Manual Mode**. **A**
- When **Manual Mode** shows on the screen, you may push the cart freely. **B**
- To switch on the electric powered mode while pushing the cart in **Manual Mode**, turn dial clockwise. **C**
- The motors will then be activated according to the current speed level. **D**
- To switch back to **Manual Mode**, turn the dial counter-clockwise until the speed level is zero. **E**
- When **Manual Mode** shows on the screen, you may push the cart freely. **F**

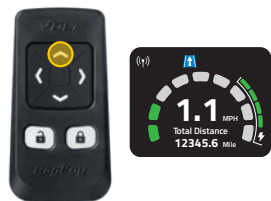
DISTANCE CONTROL

The speed level will be locked at level 4 in this mode, and the green indicator blocks will have a layer of slashes to indicate lock mode. Be sure to set the cart in the direction you desire before sending the Volt off to the desired distance.



- When the Volt is parked, press and hold left button for over 3 seconds **A** to access the **Distance Control** setting page.
- Note: Pressing the left button will move back to the main page.
- Turn the dial to set the desired distance between 5-30 yards/meters. **B**
- Note: The preset distance is 20 yards/meters.
- Tap the dial to send the Volt off to the desired distance. **C**
- The remaining distance will display on the screen.
- Note: The counting icon will flash while moving. Another tap will stop the cart.
- **TrueLine** will automatically turn on while moving.
 - Note: Read the description of "TrueLine" on page 27.

REMOTE



FORWARD

- The starting speed is level 2. Each subsequent tap increases the speed by one level, with the maximum speed level being 9.
- Press and hold the forward button to speed up the motor quickly (accelerate to level 9 in 3 seconds).



REVERSE

- When the brakes are activated, press and hold the reverse button to move the cart in reverse.
- While moving forward, every time you tap the reverse button, the speed will be reduced by 1 level, and the minimum speed is level 1.



LEFT / RIGHT

- When you tap the left or right button, the cart will turn slightly before continuing to move forward (no matter if the cart is moving or stopped).
- When holding the left or right button, the cart will continue to move in the selected direction until the button is released.



STOP

- Stop the cart by tapping the center button in any case.
- Note: Read the motor protection description on the "Warning Info" page (p. 29).*



UNLOCK

- If the remote control keys are locked, press the unlock button to unlock the keypads.
- Note: The blue LED will light up if any button is pushed while the remote is unlocked.*



LOCK

- Press the lock button to limit and prevent unexpected control.
- Note: The red LED will light up if any button is pushed while the remote is locked.*



CHARGING PORT

- The USB-C charging port is located underneath the rubber cover on the bottom of the remote.
- Note: The keypad will be locked while charging.*



REMOTE CHARGER

- Before using the remote, please make sure that it is fully charged.
- The remote contains a rechargeable lithium battery. Charge the remote with the provided USB cable.

CHARGING

Before using the remote, please make sure that it is fully charged.



LOW BATTERY INDICATORS

- When the battery level of the remote is low, the **blue LED** and the **red LED** will start to flash at the same time.
- The remote low power icon will appear on the display screen.



DEAD REMOTE

- When the battery is completely drained, no LED lights will light up when any button is pressed.



CHARGING

- The **blue LED** flashes when charging is in progress.

Note: The keypad will be locked while charging.



FULLY CHARGED

- The **blue LED** will remain solid when fully charged.

Note: A full charging process takes about 6 hours.

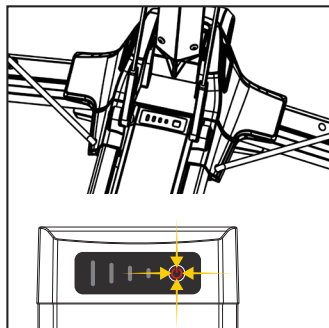
REMOTE LED LIGHTS

Below is a chart describing the LED lights on the remote and what they mean.

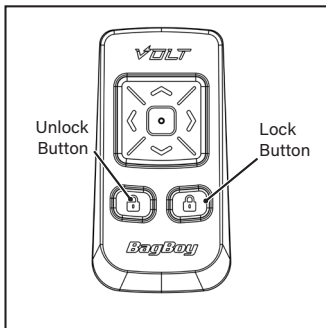
LED VISUAL	DESCRIPTION OF LED LIGHTS	STATES
	The blue and red LED keep flashing.	Low battery
	The blue LED stays on.	Battery fully charged
	The blue LED keeps flashing.	Battery is charging
	The blue LED and red LED flash separately.	Ready to pair
	The blue LED lights up while pressing any button.	Keypad is unlocked
	The red LED lights up while pressing any button.	Keypad is locked

PAIRING YOUR REMOTE

Your remote should already be paired to your Volt, but if it is not, please follow the pairing guide.

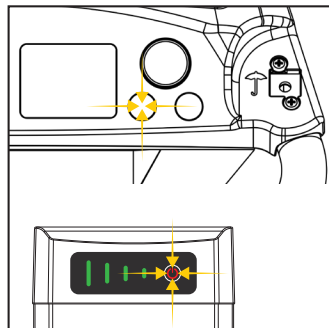


- While the battery is connected to the cart, turn off the power to the Volt battery.



- Press and hold the lock & unlock buttons on the remote at the same time until the blue and red LED blink alternately.

The remote will enter into the pairing mode and continue sending the pairing signal for 60 seconds.



- Press and hold the left button, then turn on the power to the Volt battery.

The cart will enter into the pairing mode.

* The keypad of the remote will be locked during the pairing mode except for the unlock button.

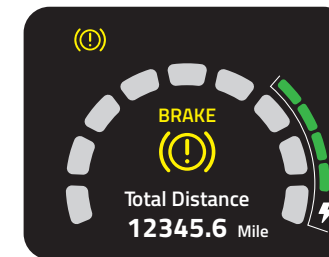
* The remote will automatically exit pairing mode after 60 seconds, or you can press and hold the unlock button for 3 seconds to exit pairing mode manually.



- The cart will search for the pairing signal from the remote for 5 seconds automatically after switched on.



- Pairing is complete when the screen displays **Found a New Remote**.



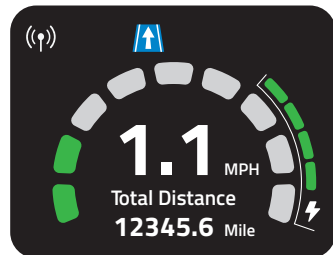
- The screen will then automatically enter into the main page.

TRUeline

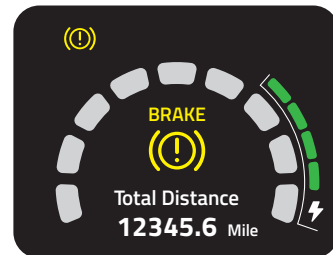
This function ensures the cart will move forward in the direction you expect and will not be offset by the direction of the turf. TrueLine is automatically engaged while the cart is moving in the forward direction, whether it is by the Distance Control or remote operating modes.



- While using *Distance Control*, this function will turn on, and the TrueLine icon will display on the screen.



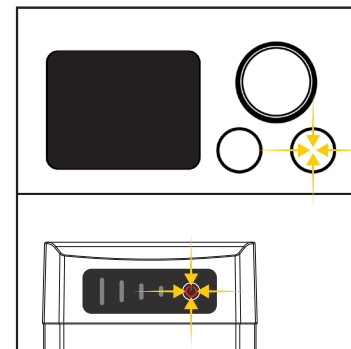
- While using the remote, this function will turn on, and the TrueLine icon will display on the screen.



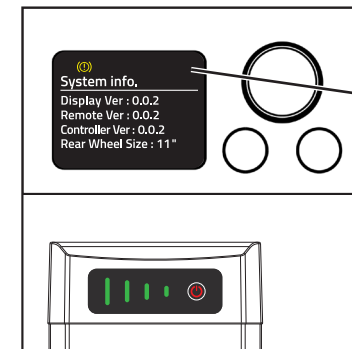
- If the cart hits an obstacle and turns too much, the brakes will be activated.

SYSTEM INFO.

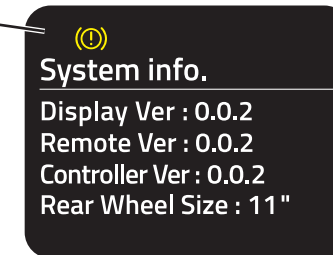
The cart will ignore remote control commands while the System Information page is on display.



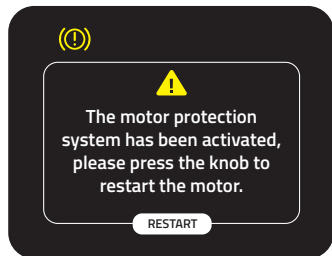
- Press and hold the right button while powering on the cart, and the cart will enter into the System Information page.



- The System Information page will show up on the display.

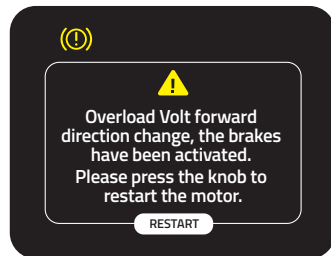


DISPLAY WARNING INFO.



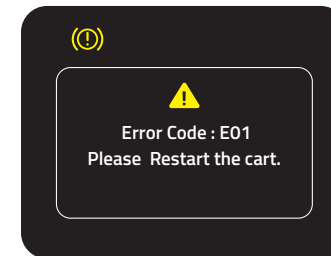
MOTOR PROTECTION

- When the system detects the motor overload condition, it will display this notification and activate the brakes.
- Press the dial to close the notification, and move the cart to a flat surface to continue using it.
- If this prompt still shows up, please remove the battery from the cart and contact customer service for support.



ANGLE DETECTION

- When TrueLine Tracking is activated, and the system is detecting that the Volt forward direction has changed to over 90 degrees, "it will detect that the cart has potentially crashed, and the brake will be activated at once to protect the motor system.
- You may continue to use the cart once this warning is dismissed by pressing the forward button.
- If this prompt continues to display, please remove the battery from the cart and contact customer service for support.



SIGNAL ABNORMALITY WARNING

- When this notification displays, the brakes will be activated.
- Please restart the power of the battery, then you can continue using it.
- If this prompt still shows up, please remove the battery from the cart and contact customer service for support.

BATTERY CARE & SAFETY

- Always charge the battery as soon as possible after each use. Low battery power will affect the use, especially in low temperature environments, so timely charging is good for the battery life.
- The included lithium battery chargers are provided by Bag Boy. The battery charger is specially designed according to the requirements of the battery manufacturer. Volt lithium battery chargers must not be used to charge any other batteries and should only be used with Bag Boy lithium batteries.
- The Volt should avoid climbing at a high speed for an extended period of time, when the battery is low and the power lamp is 2 grids or less.
- If the battery will not be used for some time, remove it from the cart and store it in a cool, dry location with an ambient temperature of 5 °C to 25 °C (41 °F to 77 °F). Avoid hot or extremely cold locations.
- Please charge the battery within 24 hours after use, especially when the power indicator lamp is at 1 grid and out of power.
- During long periods of no usage, charge the battery once every 3 months before returning it to a cool location for storage.
- Do not use the battery at ambient temperatures below -15 °C (5 °F) or above 50 °C (122 °F). Failure to observe this precaution could damage the battery or impair its performance. Charge the battery indoors at ambient temperatures of 5 °C–40 °C (41 °F–104 °F). The battery will not charge if its temperature is below 0 °C (32 °F) or above 50 °C (122 °F).
- Please use the battery on the cart specified or allowed by the manufacturer, otherwise the battery may be damaged or dangerous due to the mismatch of specifications.
- Batteries may be hot after use. Observe due caution when removing batteries from the cart.

BATTERY CARE & SAFETY

- The battery charger should only be opened and serviced by authorized personnel. Unauthorized opening or repair will void your warranty. Risk of electrical shock or fire.
 - Do not strike, throw or trample the battery.
 - Do not use and leave the battery near a heat source such as fire or heater.
 - Do not connect the charger if the charge port, charge cable or the battery is wet.
 - Do not splash or immerse the battery in liquids.
 - If the battery gives off an odor, generates heat, or in any way appear abnormal during usage, recharging or storage, immediately remove it from the cart and stop using it.
 - Never use the battery if the case or terminals are damaged.
 - Water damage will void the warranty
 - The battery is a sealed unit. In the unlikely event liquid leaks from the battery, do not touch the liquid as it may cause irritation or burns.
- Follow these precautions if contact with battery liquid occurs:**
- **Skin contact:** Wash with soap and water.
 - **Inhalation:** Expose to fresh air and seek medical advice.
 - **Eye contact:** Immediately wash with water at least 15 minutes. Seek medical attention.
 - **Disposal:** Wear gloves to handle the battery and dispose of immediately, contact your local council or recycling center.

This device complies with part 15 of the FCC Rules. Operation is subject to the following two conditions: (1) this device may not cause harmful interference, and (2) this device must accept any interference received, including interference that may cause undesired operation.

This Transmitter must not be co-located or operating in conjunction with any other antenna or transmitter.

Any changes or modifications not expressly approved by Bag Boy for compliance could void the user's authority to operate this equipment.

This equipment has been tested and found to comply with the limits for a Class B digital device, pursuant to part 15 of the FCC Rules. These limits are designed to provide reasonable protection against harmful interference in a residential installation.

This equipment generates, uses and can radiate radio frequency energy and, if not installed and used in accordance with the Instructions, may cause harmful interference to radio communications. However, there is no guarantee that interference will not occur in a particular installation. If this equipment does cause harmful interference to radio or television reception, which can be determined by turning the equipment off and on, the user is encouraged to try to correct the interference by one or more of the following measures:

- Reorient or relocate the receiving antenna.
- Increase the separation between the equipment and receiver.
- Connect the equipment into an outlet on a circuit different from that to which the receiver is connected.
- Consult the dealer or an experienced radio/TV technician for help.

This product has demonstrated EMC compliance under conditions that included the use of compliant peripheral devices and shielded cables between system components. It is important that you use compliant peripheral devices and shielded cables between system components to reduce the possibility of causing interference to radios, televisions, and other electronic devices.

FCC Radiation Exposure Statement:

This equipment complies with FCC RF radiation exposure limits set forth for an uncontrolled environment.

This equipment should be installed and operated with a minimum distance of 20 centimeters between the radiator and your body.

Responsible party (contact for FCC matters only):

Dynamic Brands
2701 Emerywood Pkwy., Ste. 200
Richmond, VA 23294
USA
(804) 726-1343



HOW FAR WILL THE CART GO BEFORE IT AUTOMATICALLY STOPS?

The cart will not automatically stop, unless using the Distance Control mode.

CAN THE VOLT BE PUSHED MANUALLY?

Yes, the cart can be pushed manually by either turning off the battery or engaging Manual Mode by clicking the control dial while the battery is on.

DOES THE VOLT HAVE A USB PORT?

No, it does not have a USB port.

DOES THE VOLT HAVE A SCORECARD HOLDER?

Yes, it is underneath the console lid.

HOW DO YOU CLEAN THE VOLT?

Clean the Volt using a damp microfiber towel. Do not use a pressure washer or water hose.

WHERE SHOULD I STORE THE VOLT?

The Volt should be stored in cool and dry places. Do not store in warm/hot areas.

WHERE CAN I GET REPLACEMENT PARTS FOR THE VOLT?

For replacement parts, please call customer service at 800.955.2269

Should you have any questions or concerns about the performance of your Volt, please contact us at:

1-800-955-2269

Warranty information is available at:

bagboy.com