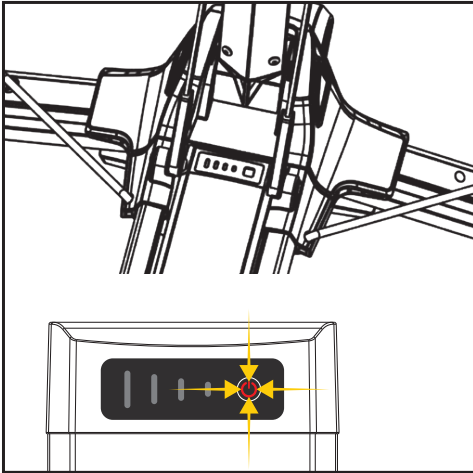
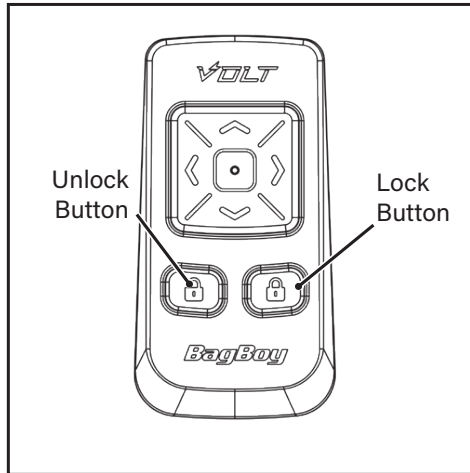


PAIRING YOUR REMOTE

Your remote should already be paired to your Volt, but if it is not, please follow the pairing guide.

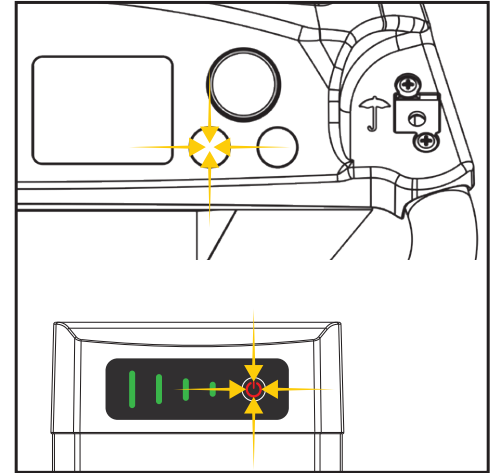


- While the battery is connected to the cart, turn off the power to the Volt battery.



- Press and hold the lock & unlock buttons on the remote at the same time until the blue and red LED blink alternately.

The remote will enter into the pairing mode and continue sending the pairing signal for 60 seconds.



- Press and hold the left button, then turn on the power to the Volt battery.

The cart will enter into the pairing mode.

* The keypad of the remote will be locked during the pairing mode except for the unlock button.

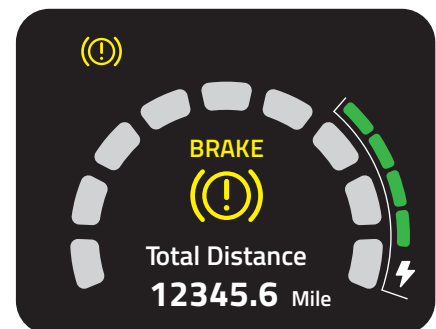
* The remote will automatically exit pairing mode after 60 seconds, or you can press and hold the unlock button for 3 seconds to exit pairing mode manually.



- The cart will search for the pairing signal from the remote for 5 seconds automatically after switched on.



- Pairing is complete when the screen displays **Found a New Remote**.



- The screen will then automatically enter into the main page.